



2020

TEAM

PANTS & TIGHTS COLLECTION

"We Have Your Color"



Advertising Specialty Institute
asi.3768.com



NEW
IMMEDIATE
ARRIVAL



L800
LADIES HIGH RISE LEGGINGS



SIZES: XS, S, M, L, XL, 2X, 3X
MSRP: \$26.50 - \$29.50

80% NYLON / 20% SPANDEX, 5.6 OUNCE
WAISTBAND POCKET
SIDE DROP-IN POCKETS
REFLECTIVE DETAILS
RAW EDGED HEM
FLATLOCK STITCHES ON FRONT & BACK RISE, INSEAM & GUSSET
BREATHABLE, MOISTURE MANAGEMENT
FRESH ASSURANCE WITH ANTI-BACTERIAL TREATMENT
UV PROTECTION
INSEAM 25 INCH



BLACK



HIDDEN POCKET

L700
LADIES LEGGINGS



SIZES: XS, S, M, L, XL, 2X, 3X
MSRP: \$20.00 - \$25.00

85% POLYESTER / 15% SPANDEX, 8.7 OUNCE
BREATHABLE, MOISTURE MANAGEMENT
FRESH ASSURANCE WITH ANTI-BACTERIAL TREATMENT
UV PROTECTION
LADIES INSEAM 27 INCH / GIRLS INSEAM GRADED

L700Y
GIRLS LEGGINGS



SIZES: YS, YM, YL
MSRP: \$19.00



BLACK

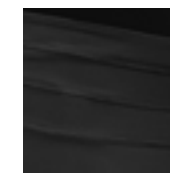


Y600
LADIES CAPRI



SIZES: XS, S, M, L, XL, 2X
MSRP: \$21.00 - \$23.00

85% POLYESTER / 15% SPANDEX, 8.5 OUNCE
BREATHABLE, MOISTURE MANAGEMENT
FRESH ASSURANCE WITH ANTI-BACTERIAL TREATMENT
UV PROTECTION
BACK MEDIA POCKET WITH MESH LINING & ZIPPER
FLATLOCK STITCH
20 INCH INSEAM



BLACK



GRAPHITE



FT60
 MEN'S FRENCH TERRY PANT



SIZES: S, M, L, XL, 2X, 3X
 MSRP: \$26.00 - \$29.00

60% COTTON / 40% POLYESTER, 9.75 OUNCE
 BREATHABLE, MOISTURE MANAGEMENT
 FRESH ASSURANCE WITH ANTI-BACTERIAL TREATMENT
 UV PROTECTION
 DYED TO MATCH DRAWSTRING
 FRONT SLASH POCKETS AND ONE BACK POCKET



HEATHER
 BLACK

HEATHER
 GREY

FT61
 LADIES FRENCH TERRY PANT



SIZES: XS, S, M, L, XL, 2X
 MSRP: \$26.00 - \$28.00

60% COTTON / 40% POLYESTER, 9.75 OUNCE
 BREATHABLE, MOISTURE MANAGEMENT
 FRESH ASSURANCE WITH ANTI-BACTERIAL TREATMENT
 UV PROTECTION
 DYED TO MATCH DRAWSTRING
 FRONT SLASH POCKETS AND ONE BACK POCKET



HEATHER
 BLACK

HEATHER
 GREY



F64
ADULT TRI-BLEND PERFORMANCE JOGGER PANT



SIZES: XS, S, M, L, XL, 2X, 3X
MSRP: \$28.00 - \$31.00

F64Y
YOUTH TRI-BLEND PERFORMANCE JOGGER PANT



SIZES: YXS, YS, YM, YL
MSRP: \$26.00

51% RAYON / 45% POLYESTER / 4% SPANDEX, 7.5 OUNCE
BREATHABLE MOISTURE MANAGEMENT
FRESH ASSURANCE WITH ANTI-BACTERIAL TREATMENT
UV PROTECTION
SIDE SEAM POCKETS
*FABRIC CONTENTS MAY SLIGHTLY DIFFER BY COLOR

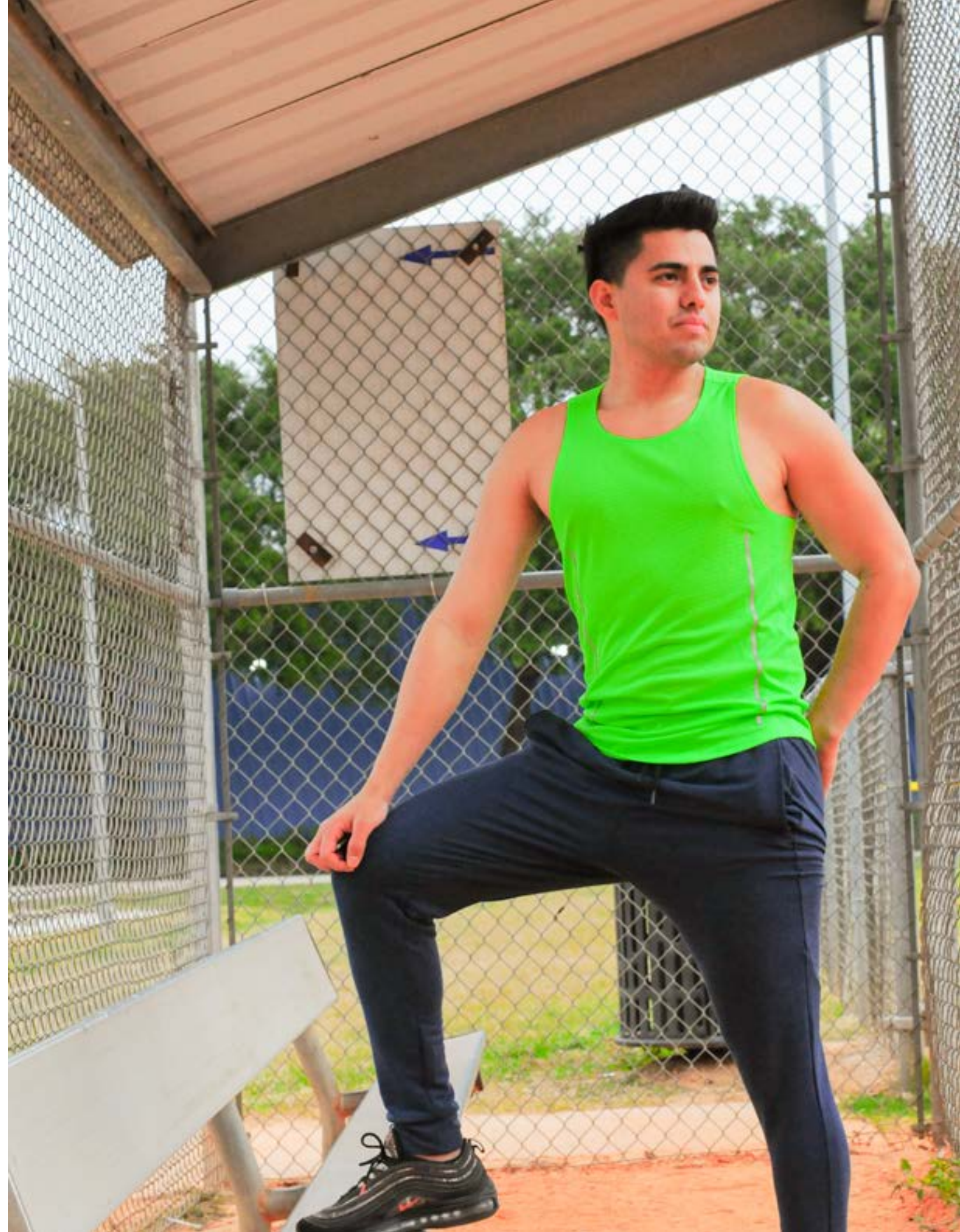
MATCHING TOPS ON PG. 119 & 131



HEATHER
BLACK

BLACK

HEATHER
NAVY



EF111
ADULT "THE ELEMENTS" FLEECE PANT



SIZES: S, M, L, XL, 2X, 3X, 4X
SOLID MSRP: \$30.00 - \$34.00
HEATHER MSRP: \$32.00 - \$36.00

EF111Y
YOUTH "THE ELEMENTS" FLEECE PANT



SIZES: YXS, YS, YM, YL, YXL
SOLID MSRP: \$29.00
HEATHER MSRP: \$31.00

100% POLYESTER THERMO TEK™, 7.0 OUNCE
WATER REPELLENT TREATMENT
BREATHABLE MOISTURE MANAGEMENT
FRESH ASSURANCE WITH ANTI-BACTERIAL TREATMENT
UV PROTECTION
SIDE SEAM POCKETS



F110
ADULT FLEECE PANT



SIZES: S, M, L, XL, 2X, 3X, 4X
MSRP: \$24.00 - \$28.00

F110Y
YOUTH FLEECE PANT



SIZES: YXS, YS, YM, YL, YXL
MSRP: \$22.00

100% POLYESTER THERMO TEK™, 7.0 OUNCE
BREATHABLE, MOISTURE MANAGEMENT
FRESH ASSURANCE WITH ANTI-BACTERIAL TREATMENT
UV PROTECTION
DYED TO MATCH DRAWSTRING
SIDE SEAM POCKETS



F110H
ADULT HEATHER FLEECE PANT



SIZES: S, M, L, XL, 2X, 3X, 4X
MSRP: \$26.00 - \$30.00

F110HY
HEATHER YOUTH FLEECE PANT



SIZES: YXS, YS, YM, YL, YXL
MSRP: \$23.00

100% POLYESTER THERMO TEK™, 7.0 OUNCE
BREATHABLE, MOISTURE MANAGEMENT
FRESH ASSURANCE WITH ANTI-BACTERIAL TREATMENT
UV PROTECTION
DYED TO MATCH DRAWSTRING
SIDE SEAM POCKETS



5012
ADULT TWO STRIPE PULLOVER PANT



SIZES: S, M, L, XL, 2X, 3X, 4X, 5X
MSRP: \$27.00 - \$33.00

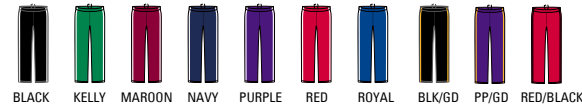
5012Y
YOUTH TWO STRIPE PULLOVER PANT



SIZES: YS, YM, YL, YXL
MSRP: \$22.50

SHELL: 100% NYLON RIPSTOP, WATER REPELLENT
LINING: NYLON MESH LINED TO KNEE
UNLINED BELOW KNEE
FLAT BOTTOM HEM WITH OUTSIDE SEAM ZIPPER
SIDE SEAM POCKETS AND REAR POCKET

*COMPATIBLE WITH JACKETS 5000 PG.156



JS009FP
RAIN STOP PANT



SIZES: S, M, L, XL, 2X, 3X, 4X
MSRP: \$40.00 - \$44.00

OUTER SHELL: 100% TASLAN WATERPROOF
UNLINED
WATERPROOF TAPED SEAMS AND RUBBERIZED ZIPPERS
ELASTIC WAIST BAND WITH DRAWSTRING
SIDE SLASH POCKETS AND REAR POCKET
FLAT CUFFS WITH OUTSIDE ZIPPER
HOOK AND LOOP SECURED CUFFS FOR ADJUSTABLE FIT
MACHINE WASHABLE

*COMPATIBLE WITH JACKETS JS009J PG. 156



TC615
MEN'S TRICOT PANT



SIZES: S, M, L, XL, 2X, 3X, 4X
MSRP: \$24.00 - \$28.00

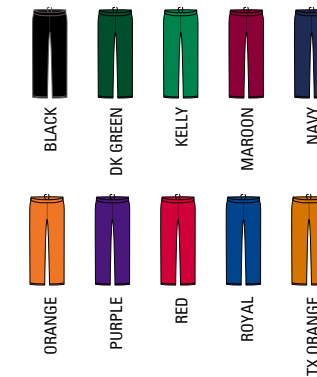
TC615Y
YOUTH TRICOT PANT



SIZES: YS, YM, YL, YXL
MSRP: \$20.00

100% POLYESTER TRICOT, 6.0 OUNCE
MOISTURE-MANAGEMENT FABRIC
DOUBLE NEEDLE HEMMED BOTTOM
SIDE SEAM POCKETS
COVERED ELASTIC WAISTBAND WITH INSIDE DRAWSTRING

*COMPATIBLE JACKET IS ON PG. 157, 158, 159



TC616
LADIES TRICOT PANT



SIZES: XS, S, M, L, XL, 2X, 3X
MSRP: \$24.00 - \$27.00

100% POLYESTER TRICOT, 6.0 OUNCE
MOISTURE-MANAGEMENT FABRIC
DOUBLE NEEDLE HEMMED BOTTOM
SIDE SEAM POCKETS
COVERED ELASTIC WAISTBAND WITH INSIDE DRAWSTRING

*COMPATIBLE JACKET IS ON PG. 157, 158, 159

NOTES:

§ SIZE SPECIFICATIONS

MEN'S KNITS & WOVENS (all figures in inches)

	XS	S	M	L	XL	2X	3X	4X	5X	6X
NECK	13	14-14.5	15-15.5	16-16.5	17-17.5	18-18.5	19-19.5	20-20.5	21	21.5
CHEST	30-32	34-36	38-40	42-44	46-48	50-52	54-56	58-60	61-63	64-66

LADIES KNITS & WOVENS (all figures in inches)

	XS	S	M	L	XL	2X	3X
SIZE	2	4-6	8-10	12-14	16-18	18-20	22-24
CHEST	30-31	32-33	34-35	36-38	40-42	44-46	48-50

YOUTH KNITS & WOVENS (all figures in inches)

	YXS	YS	YM	YL	YXL
SIZE	4-5	6-8	10-12	14-16	16-18
CHEST	25-26	26-27	28-29	30-31	32-33

LADIES BLOUSE (all figures in inches)

	XS	S	M	L	XL	2X	3X	4X
SIZE	2	4-6	8-10	12-14	16-18	18-20	22-24	26-28
CHEST	29-30	31-32	33-34	35-36	38-40	42-44	46-48	50-52

MEN'S PANTS (all figures in inches)

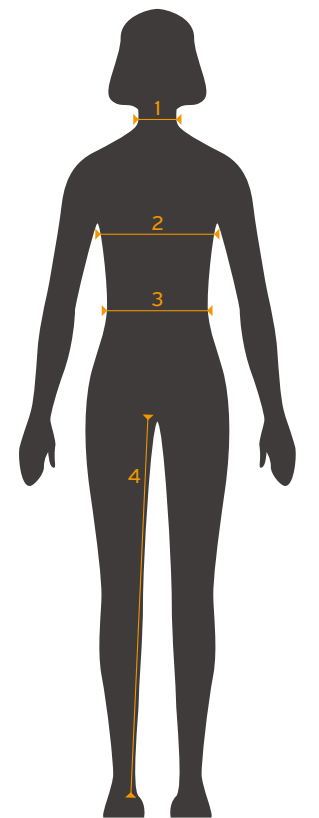
	S	M	L	XL	2X	3X	4X
INSEAM	27.5	29	30	31	31.5	32	32

LADIES PANTS (all figures in inches)

	S	M	L	XL	2X
INSEAM	27	28	29	29.5	30

YOUTH PANTS (all figures in inches)

	YS	YM	YL	YXL
INSEAM	19	20-21	22-23	24-25

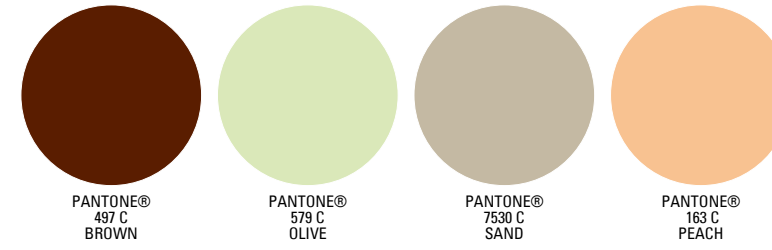


- 1 **NECK** Measure around neck just below larynx
- 2 **CHEST** Measure around fullest part of chest under arms
- 3 **WAIST** Measure around waist where pant is worn
- 4 **INSEAM** Measure from crotch to cuff

8 BAW COLOR REFERENCE



COLOR Accuracy Disclaimer:
Due to many factors, we cannot guarantee the colors displayed in this catalog will exactly match the color of the actual product.

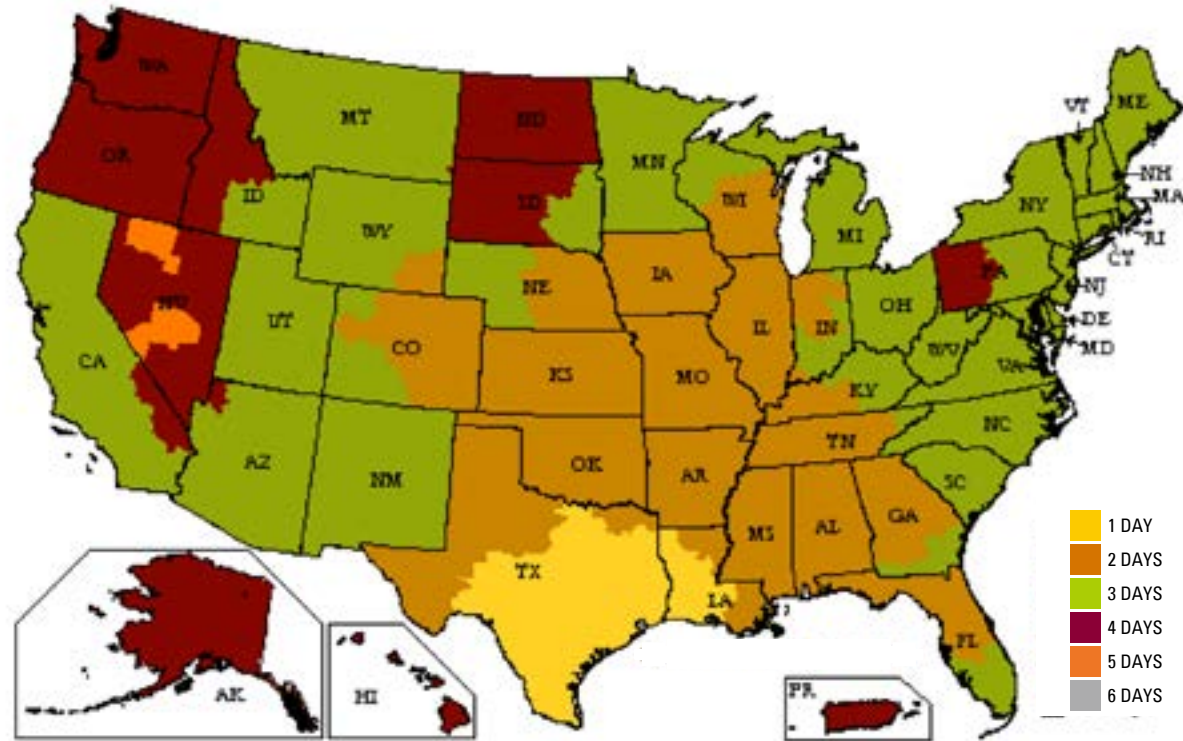


COLOR Accuracy Disclaimer:
Due to many factors, we cannot guarantee the colors displayed in this catalog will exactly match the color of the actual product.



TIME-IN TRANSIT

GROUND SHIPPING Normal UPS Time-in-transit from BAW warehouse in Katy, Texas

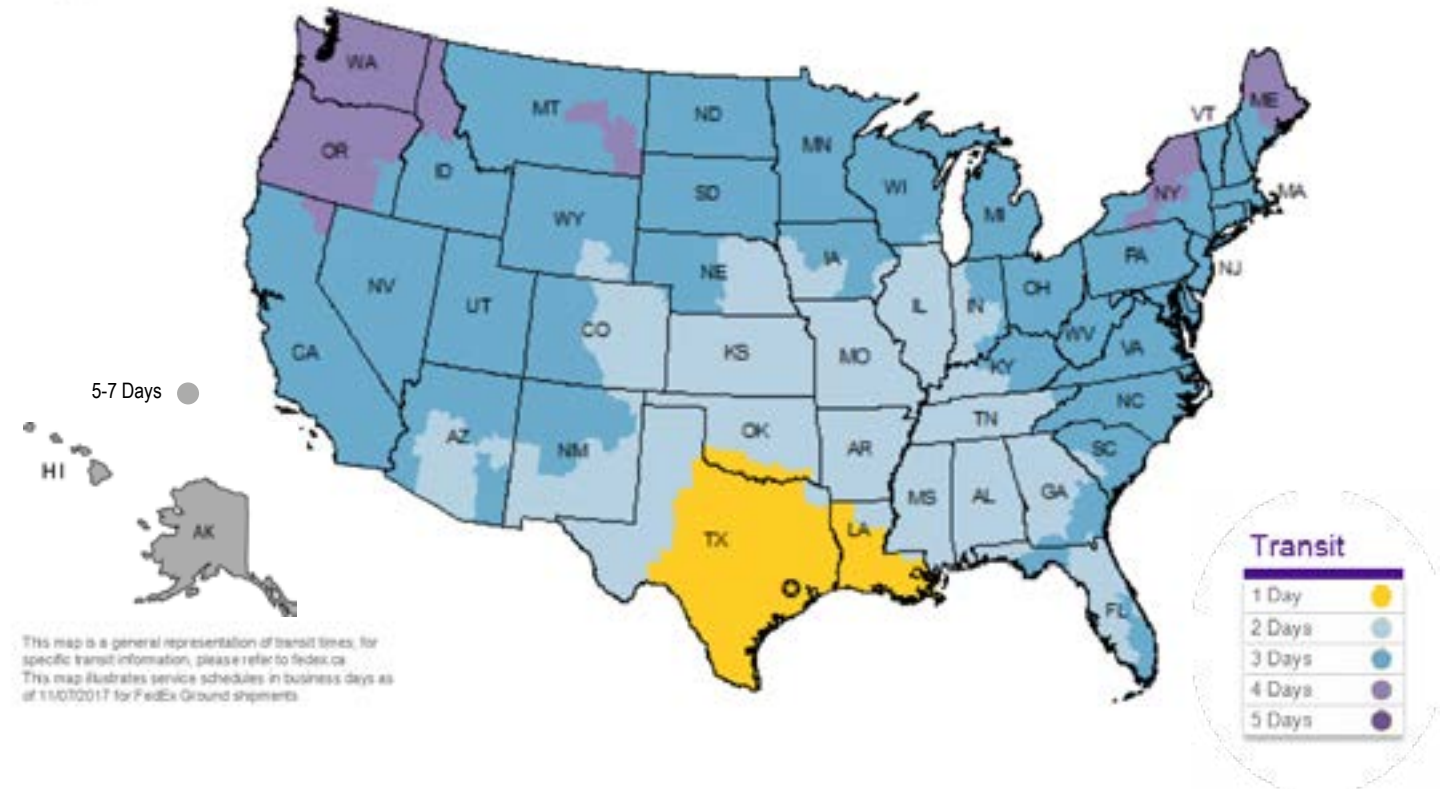


BAW POLICY: Same day shipping on orders placed by 2:00 PM (CST)
*Certain restrictions may apply.



TIME-IN TRANSIT

GROUND SHIPPING Normal FedEx Time-in-transit from BAW warehouse in Katy, Texas



BAW POLICY: Same day shipping on orders placed by 2:00 PM (CST)
*Certain restrictions may apply.

PRESORTED
STANDARD
US POSTAGE PAID
KATY, TEXAS
PERMIT NO 24

BAW

"We Have Your Color"

Since 1996

24
years

&

BALANCED
ATTRACTIVE
WORLD-CLASS
BEST
AFFORDABLE
WEARABLES

AUTHENTIC

WWW.BAWONLINE.COM

